



GMT MONTHLY MEMBERSHIP PROGRESS REPORT

Results as of: 5/31/2020

Multiple District 22

LOCATION: MARYLAND

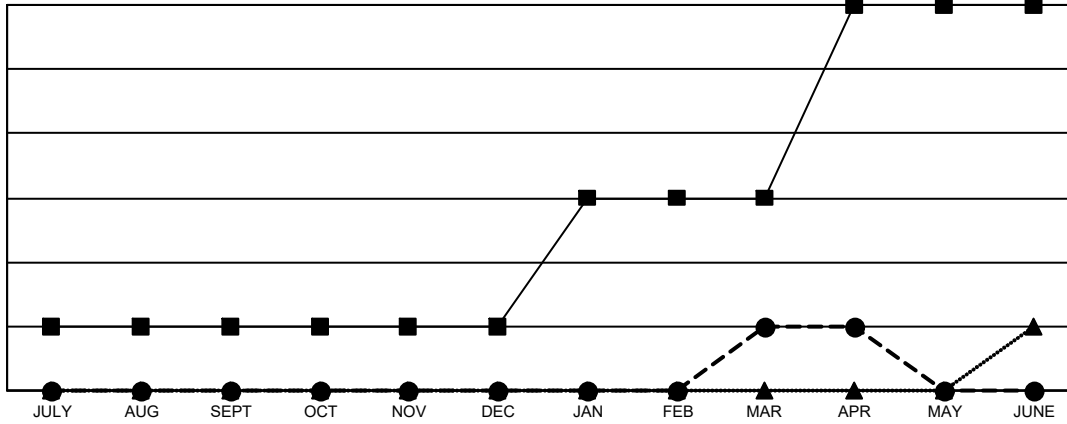
GMT: OPEN

GMT CA 1

Clubs			
RESULTS FOR 2019-2020			
QUARTER	NEW CLUB GOAL	NEW CLUBS	DROPPED CLUBS
JULY/AUG/SEPT	1	0	1
OCT/NOV/DEC	0	0	4
JAN/FEB/MAR	2	1	0
APR/MAY/JUNE	3	0	0

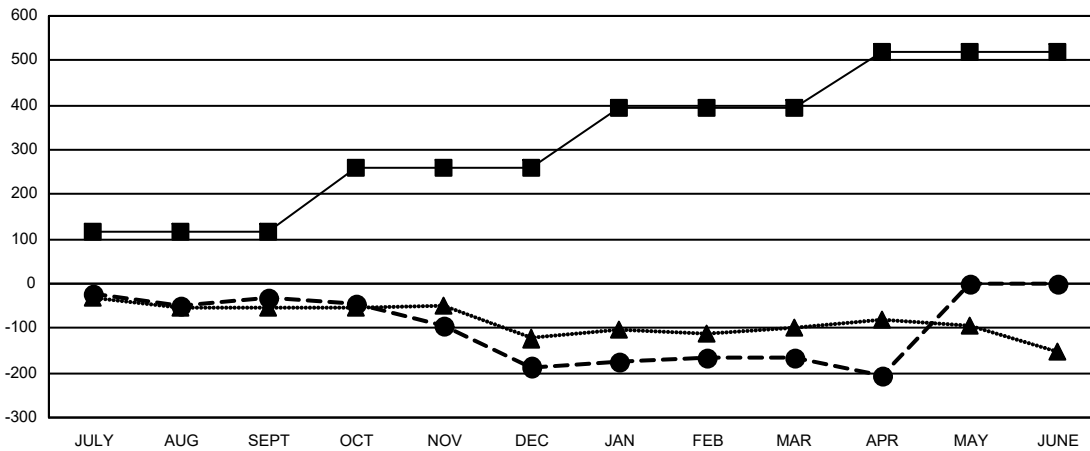
Members			
RESULTS FOR 2019-2020			
QUARTER	MEMBER GROWTH NET GOAL	MEMBER GROWTH ACTUAL	DROPPED MEMBERS ACTUAL (including transfers)
JULY/AUG/SEPT	115	138	160
OCT/NOV/DEC	145	126	250
JAN/FEB/MAR	135	152	117
APR/MAY/JUNE	125	6	44

GOALS AND ACTUAL NEW CLUBS CUMULATIVE



- - CURRENT YEAR GOALS FOR NEW CLUBS
- - CURRENT YEAR ACTUAL NEW CLUBS
- ▲ - LAST YEAR ACTUAL NEW CLUBS

GOALS AND ACTUAL MEMBERS CUMULATIVE



- - MEMBER GROWTH NET GOAL
- - MEMBER GROWTH ACTUAL
- ▲ - LAST YEAR MEMBERSHIP ACTUAL

DROPPED CLUBS: 5	
DROPPED MEMBERS	
DECEASED	111
CLUB CANCELLED	60
OTHER	399
TOTAL	570

120 CLUBS OF 213 ADDED 1 OR MORE NEW MEMBERS

GENDER DISTRIBUTION	
MALE	4,160 (65.63%)
FEMALE	2,179 (34.37%)

[CLICK HERE FOR CUMULATIVE MEMBERSHIP DATA](#)

TOTAL FAMILY UNIT MEMBERS	1,251
FAMILY MEMBERS PAYING HALF DUES	648